

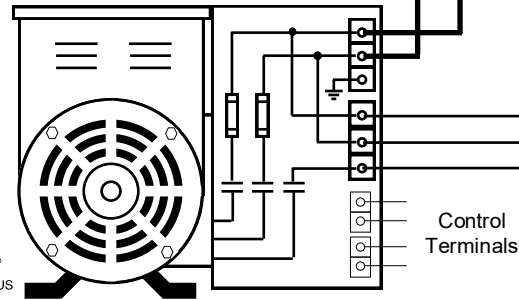
**Single-Phase Input from Main Utility Supply Panel**

L1  
L2

**Three-Phase Output to Transmitter**

T1  
T2  
T3

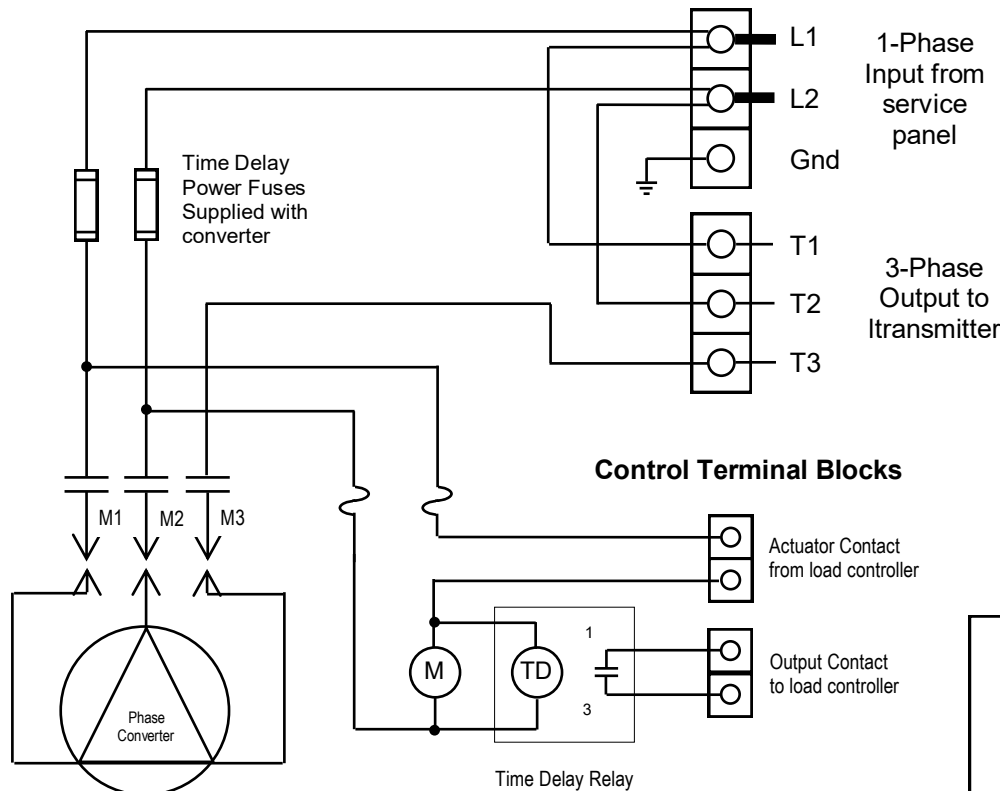
**Phasemaster®** Type T-A Rotary Phase Converter with built-in fuses and magnetic controls for remote actuation and coordination with back-up power supply



**Sequence of Operation**

1. Input actuator contact from load controller closes magnetic starter M and energizes timing relay TD.
2. Converter starts and the adjustable timing relay waits 1-5 seconds until converter reaches full speed.
3. Output contacts 1-3 then close allowing the load to start.

**Control Panel Connection Detail**



Model No.	Max KW	230 Volts			460 Volts		
		Fuse*	1-Ph Cable	3-Ph Cable	Fuse*	1-Ph Cable	3-Ph Cable
T-1300-A	6	30	#8	#10	15	#10	#12
T-2000-A	8	35	6	8	15	8	12
T-2500-A	10	40	4	8	20	8	10
T-4000-A	16	60	1	6	30	6	10
T-5000-A	20	80	1/0	4	40	4	8
T-7500-A	25	100	3/0	4	50	2	6
T-8000-A	30	125	4/0	2	60	1/0	6
T-10000-A	38	150	2-1/0	1/0	75	2/0	4
T-12000-A	45	175	2-2/0	2/0	80	2/0	4
T-14000-A	55	200	2-2/0	3/0	100	3/0	2

\* Supplied with converter

**Connection Diagram for Type T-A Phasemaster Rotary Phase Converter with automatic controls**

**0302-TA**